



Design Vinyl Sheet

eternal

wood | material | colour



creating better environments

forbo

FLOORING SYSTEMS



2,0 mm



0,7 mm



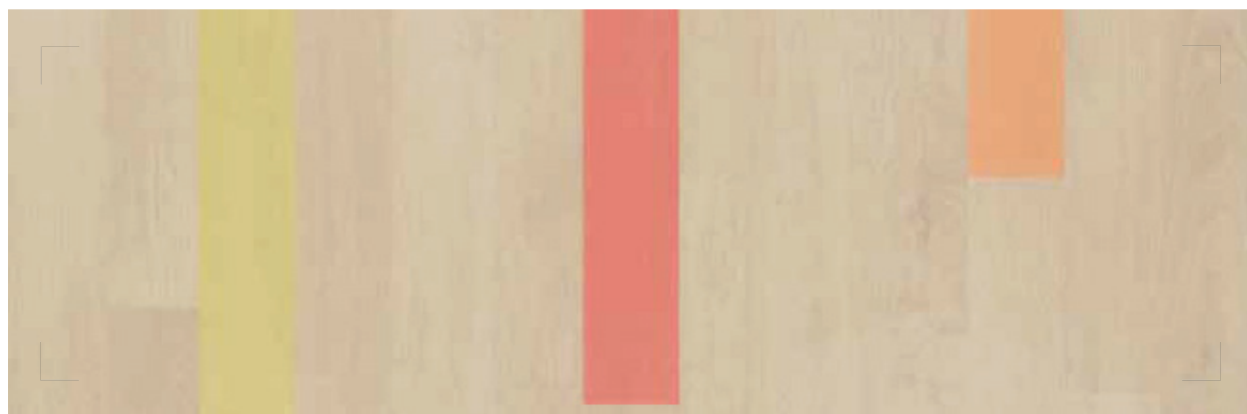
200 cm



±25 m

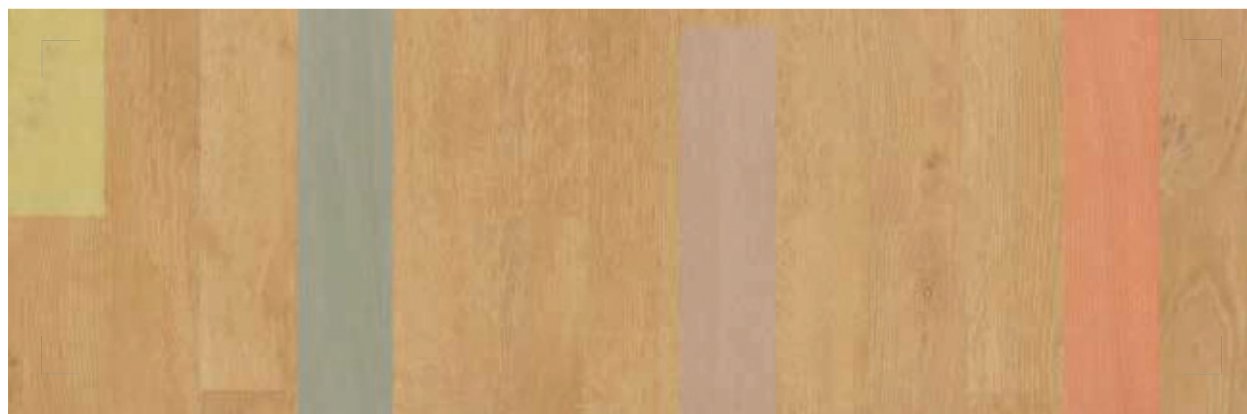



40232 | night 10132 | bright colourful planks



10132 | bright colourful planks 

LRV 36%
NCS variable



10112 | soft colourful planks 

LRV 26%
NCS variable



2,0 mm



0,7 mm



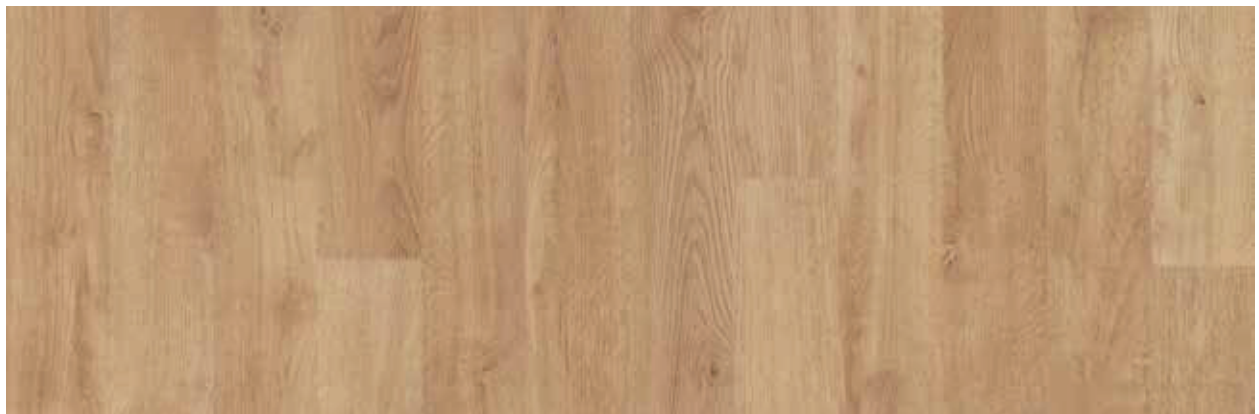
200 cm



±25 m



40062 | umber 11912 | whitewashed oak



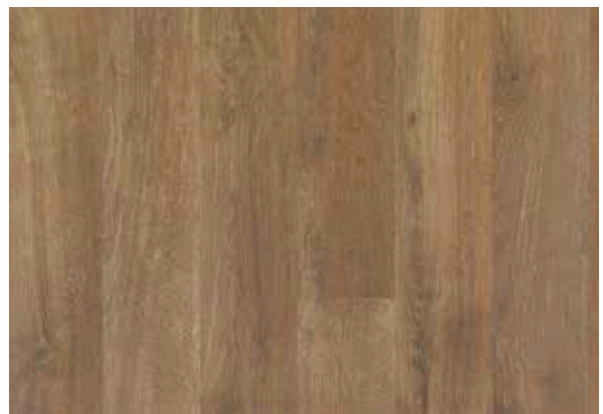
11912 | whitewashed oak

LRV 30%
NCS S 4010-Y10R



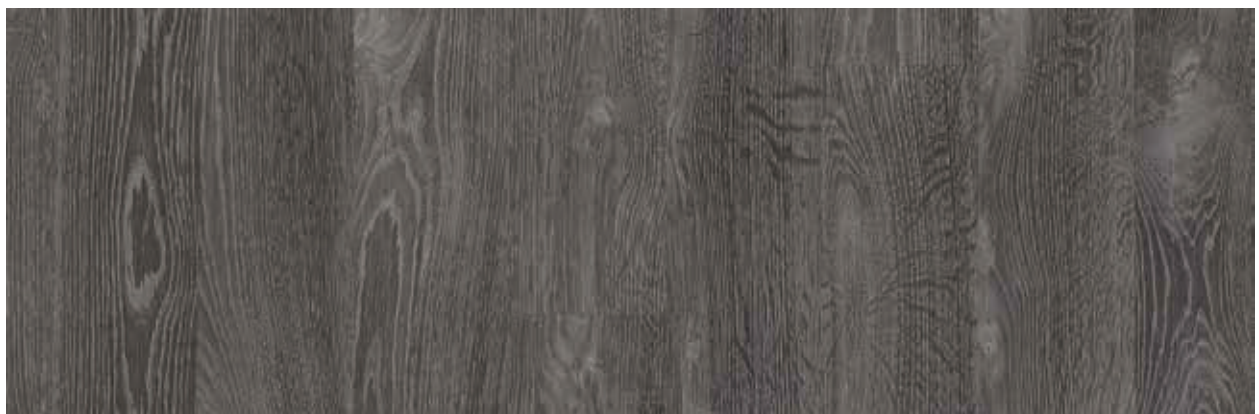
11952 | steamed oak

LRV 22%
NCS S 5005-Y20R



11932 | rustic oak*

LRV 20%
NCS S 6010-Y10R



11942 | dark grey oak*

LRV 12%
NCS S 7000-N

* Also available in Step Safety vinyl



2,0 mm



0,7 mm



200 cm



±25 mm

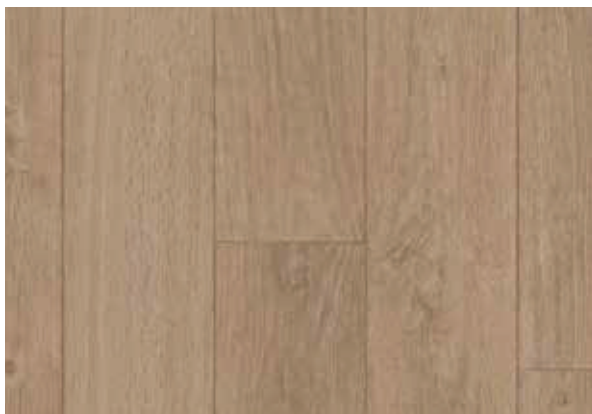


40672 | ocean 12802 | elegant oak



12802 | elegant oak*

LRV 32%
NCS S 4010-Y30R



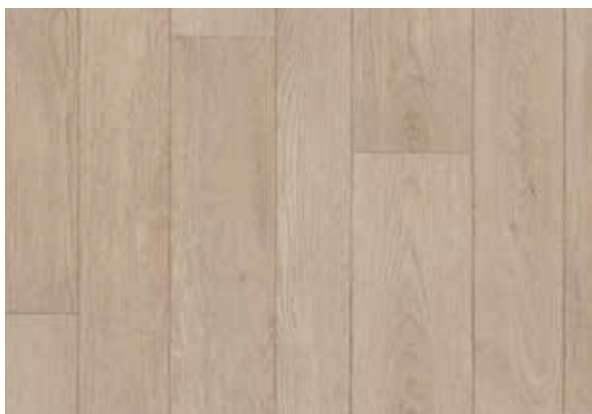
12832 | natural oak

LRV 27%
NCS S 5010-Y30R



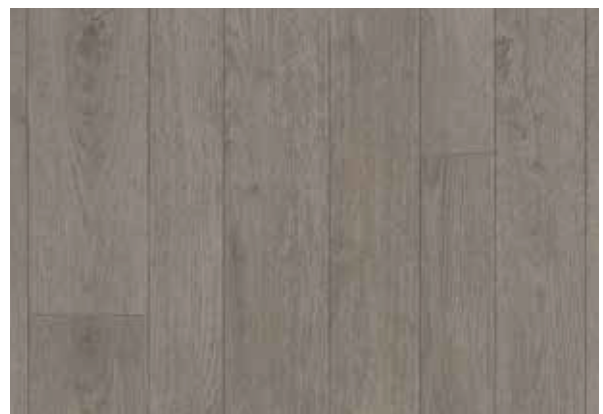
12862 | grey oak*

LRV 25%
NCS S 4502-Y



13442 | light oak

LRV 33%
NCS S 4010-Y10R



13412 | shadow oak

LRV 20%
NCS S 5502-Y

* Also available in Step Safety vinyl



2,0 mm



0,7 mm



200 cm



±25 mm

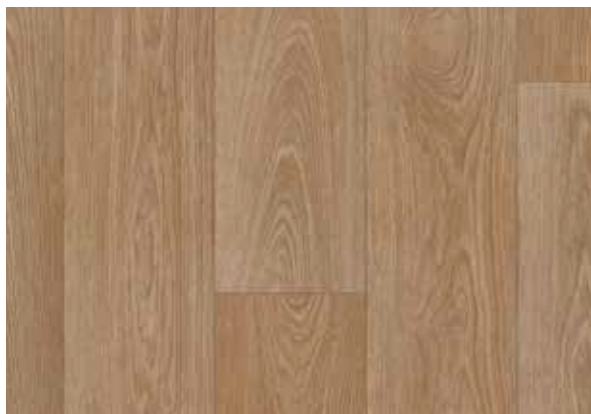


13002 | silver concrete **13952** | greywashed timber



13802 | blond timber

LRV 26%
NCS S 5010-Y10R



13942 | classic timber

LRV 22%
NCS S 5010-Y30R



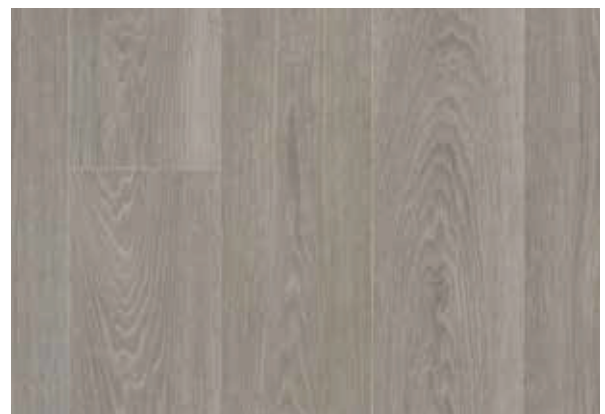
13922 | bleached timber

LRV 36%
NCS S 3005-Y50R



13932 | pale timber

LRV 31%
NCS S 4005-Y20R



13952 | greywashed timber

LRV 23%
NCS S 5502-Y



eternal wood



2,0 mm



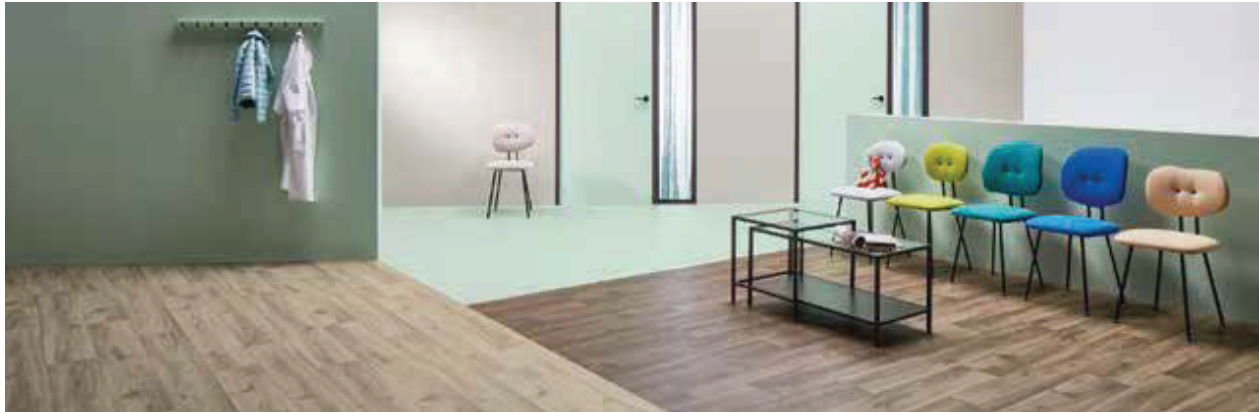
0,7 mm



200 cm



±25 mm

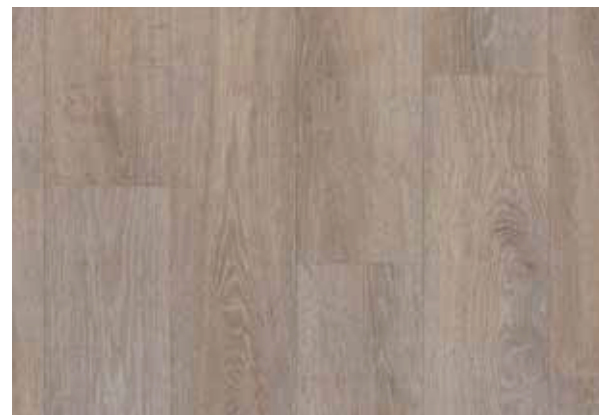


10842 | cream oak **10852** | chocolate oak **40562** | aqua



11632 | light oak

LRV 31%
NCS S 4010-Y30R



11652 | vintage oak

LRV 26%
NCS S 5005-Y20R



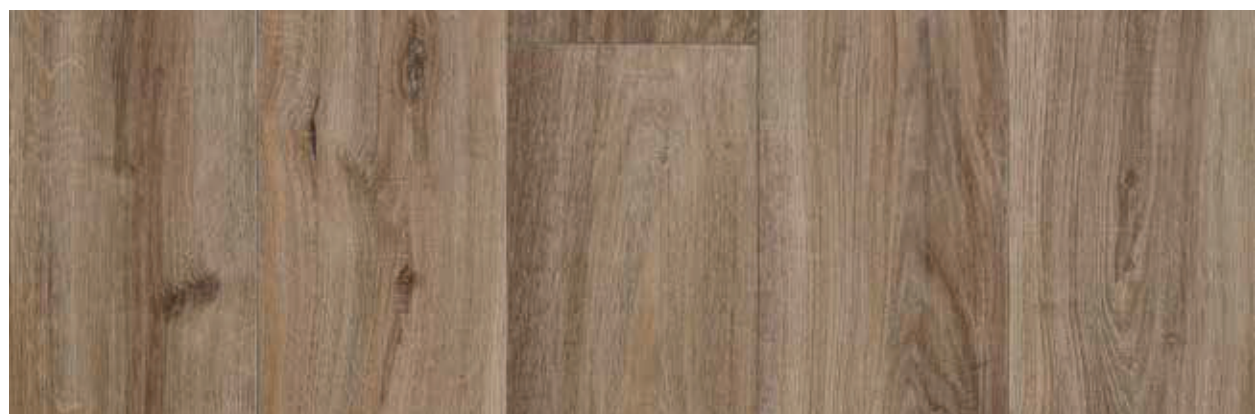
10842 | cream oak

LRV 44%
NCS S 3005-G80Y



10832 | hazelnut oak

LRV 21%
NCS S 5020-Y10R



10852 | chocolate oak

LRV 17%
NCS S 6010-Y10R





2,0 mm



0,7 mm



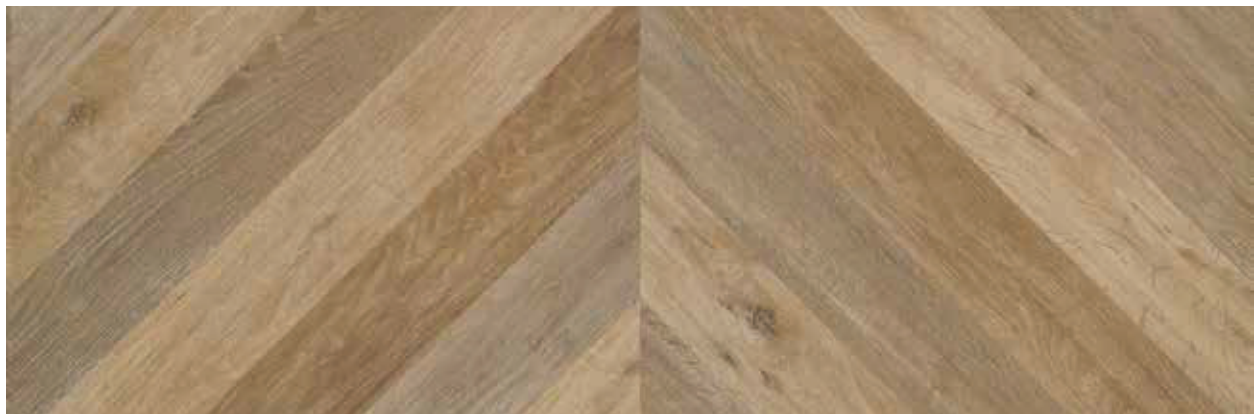
200 cm



±25 m

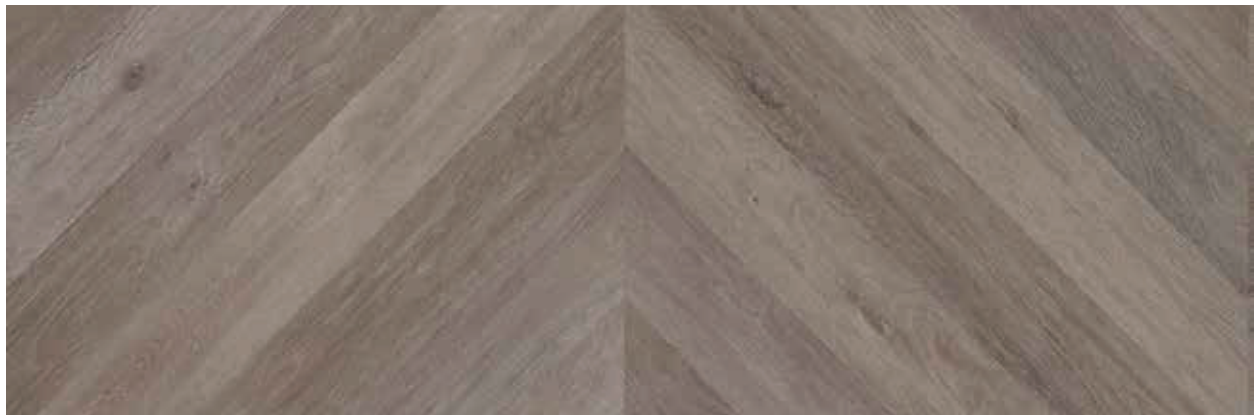


36022 | classic herringbone **13322** | grey marble



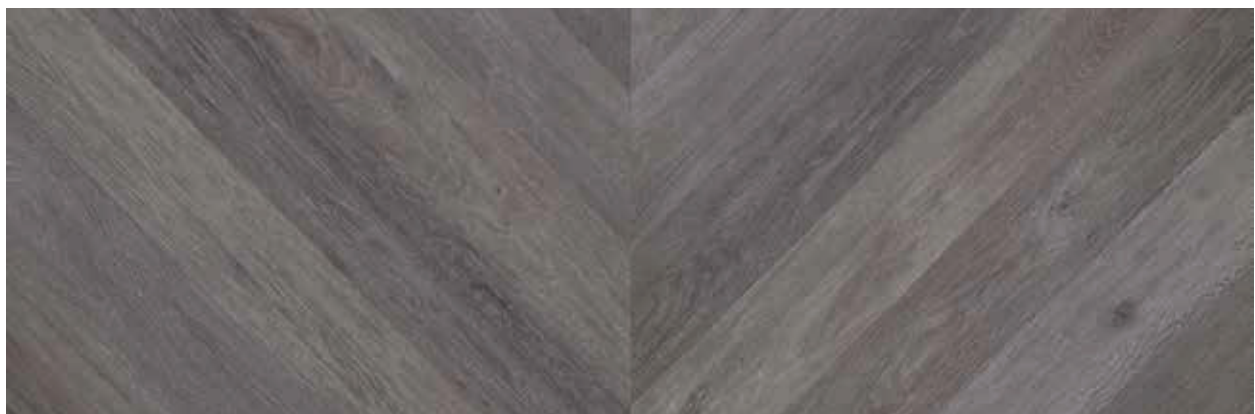
36022 | classic herringbone

LRV 21%
NCS S 5020-Y10R



36042 | brown herringbone

LRV 18%
NCS S 6005-Y20R



36062 | grey herringbone

LRV 13%
NCS S 7000-N





2,0 mm



0,7 mm



200 cm

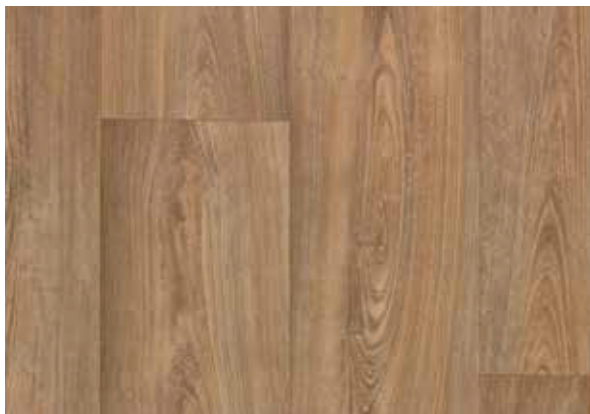


±25 mm



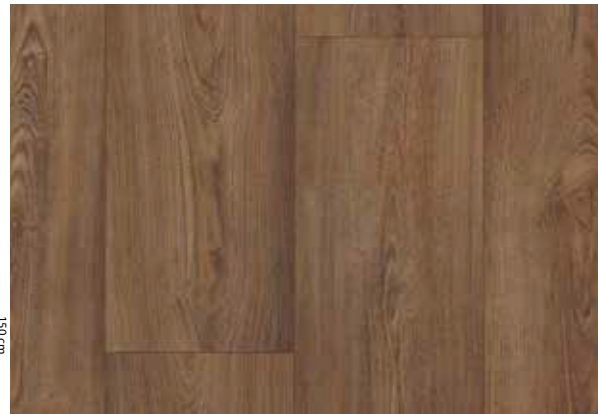
10322 | white chestnut*

LRV 34%
NCS S 4005-Y20R



10362 | warm chestnut

LRV 17%
NCS S 6010-Y30R



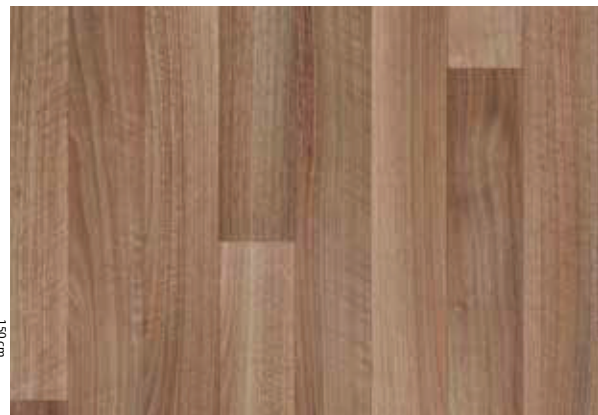
10342 | dark chestnut

LRV 12%
NCS S 7010-Y30R



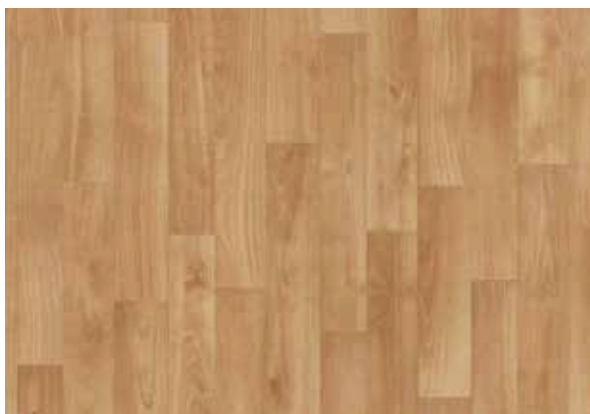
11542 | traditional oak

LRV 22%
NCS S 5030-Y20R



10232 | dark walnut

LRV 18%
NCS S 5020-Y40R



11162 | tropical beech

LRV 27%
NCS S 4020-Y20R



11442 | washed beech

LRV 28%
NCS S 4020-Y20R

* Also available in Step Safety vinyl

eternal



10322 | white chestnut 12752 | grey cement



12752 | grey cement



Forbo
FLOORING SYSTEMS

41252 | mercury contrast 11942 | dark grey oak

eternal material



R10

PUR Pearl™



2,0 mm



0,7 mm



200 cm



±25 m



12742 | light cement LRV 37%
NCS S 3502-B



12752 | grey cement LRV 28%
NCS S 4502-B



12762 | smoke cement LRV 23%
NCS S 5502-Y



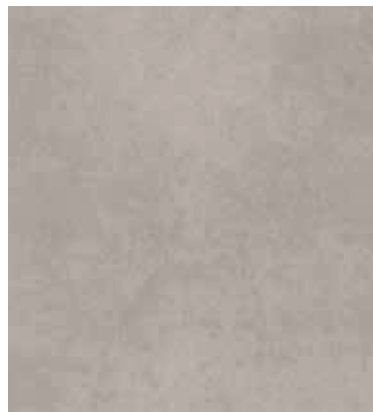
12732 | iron cement

LRV 16%
NCS S 6500-N



13022 | beton concrete*

LRV 28%
NCS S 5000-N



13002 | silver concrete LRV 64%
NCS S 3502-R



13082 | gravel concrete* LRV 16%
NCS S 6500-N



13032 | anthracite
concrete LRV 11%
NCS S 7502-R

* Also available in Step Safety vinyl



2,0 mm



0,7 mm



200 cm



±25 m



12492 | taupe textured concrete 36022 | classic herringbone



10032 | fossil stucco LRV 34%
NCS S 3502-Y



10042 | graphite stucco LRV 22%
NCS S 4502-Y



10012 | pebble stucco LRV 18%
NCS S 6000-N



12472 | mortar textured concrete LRV 39%
NCS S 3502-Y



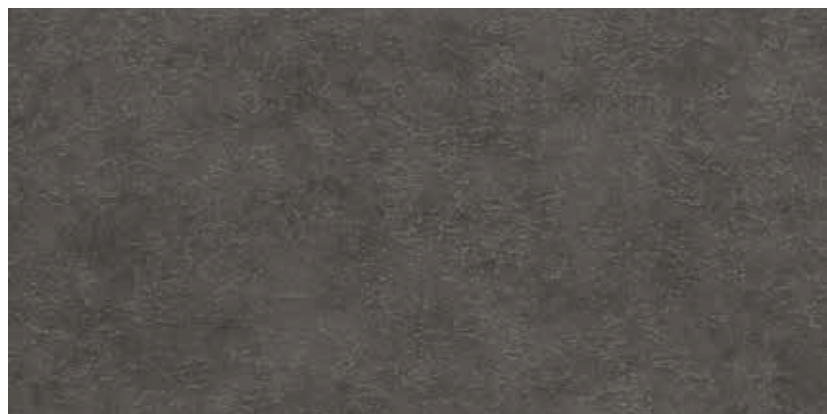
12492 | taupe textured concrete LRV 24%
NCS S 5005-Y20R



12422 | grey textured concrete LRV 22%
NCS S 5500-N



42292 | charcoal slate LRV 6%
NCS S 8500-N



13252 | grey slate LRV 13%
NCS S 7000-N



2,0 mm



0,7 mm



200 cm



±25 m



13312 | black marble 40392 | cement 13332 | white marble 13322 | grey marble



13332 | white marble LRV 49%
NCS S 2502-B



13322 | grey marble LRV 20%
NCS S 6000-N



13312 | black marble LRV 7%
NCS S 8000-N



13772 | brushed aluminium 13922 | bleached timber



13772 | brushed aluminium LRV 59%
NCS S 2002-B50G



13712 | brushed chrome LRV 24%
NCS S 5000-N



13762 | brushed bronze LRV 18%
NCS S 6010-Y10R



2,0 mm

0,7 mm


200 cm

±25 m




36062 | grey herringbone **12012** | quartz stone **10172** | natural terrazzo



10172 | natural terrazzo 

LRV 39%
NCS S 2500-N

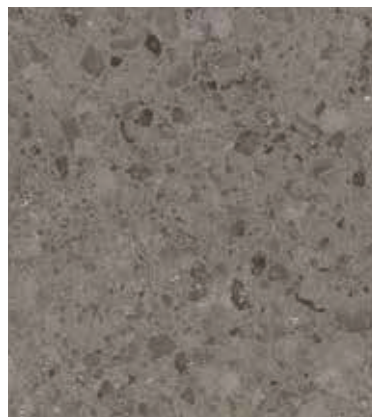


10182 | colourful terrazzo 

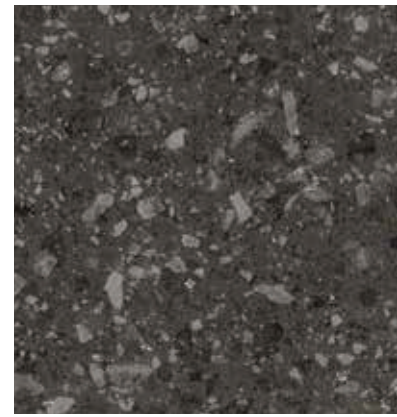
LRV 51%
NCS S 5030-B



12092 | neutral stone LRV 35%
NCS S 3500-N



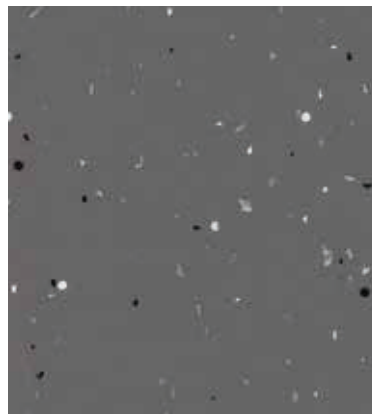
12012 | quartz stone* LRV 20%
NCS S 6000-N



12032 | coal stone* LRV 11%
NCS S 7502-B



41002 | snow contrast LRV 74%
NCS S 1002-G50Y



41252 | mercury contrast LRV 14%
NCS S 6502-B



41292 | charcoal contrast LRV 5%
NCS S 8505-R80B

* Also available in Step Safety vinyl



2,0 mm

0,7 mm

200 cm

±25 m



40002 | snow* LRV 78%
NCS S 0804-G60Y



40322 | smoke* LRV 47%
NCS S 3000-N



40412 | greige* LRV 39%
NCS S 3502-Y



40052 | pewter* LRV 26%
NCS S 5005-B20G



40462 | elephant* LRV 20%
NCS S 5500-N



40392 | cement* LRV 31%
NCS S 4005-Y20R



40092 | granite* LRV 16%
NCS S 6005-B20G



40252 | mercury* LRV 15%
NCS S 6502-B



40062 | umber* LRV 20%
NCS S 5005-Y20R



40122 | lava* LRV 10%
NCS S 7502-B



40292 | charcoal* LRV 6%
NCS S 8500-N



40502 | espresso LRV 6%
NCS S 8502-R

* Also available in Step Safety vinyl



2,0 mm



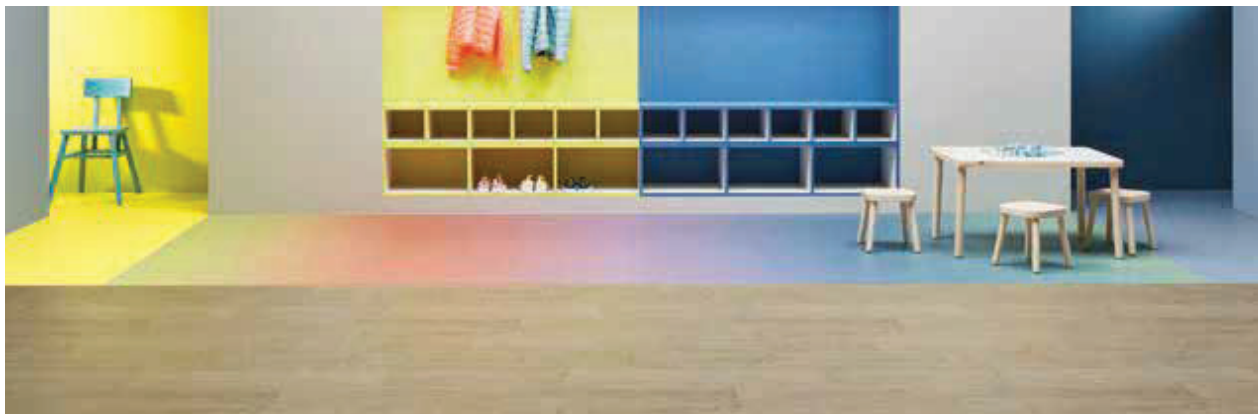
0,7 mm



200 cm



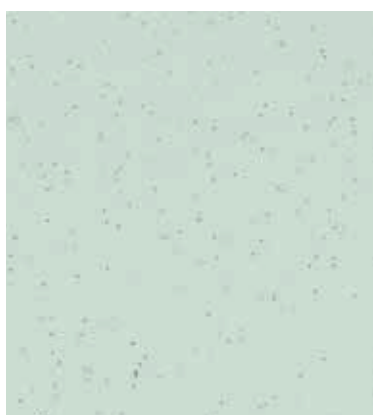
±25 m



12802 | elegant oak 45162 | soft rainbow 40522 | lemon 40332 | China blue



40522 | lemon* LRV 69%
NCS S 0540-G80Y



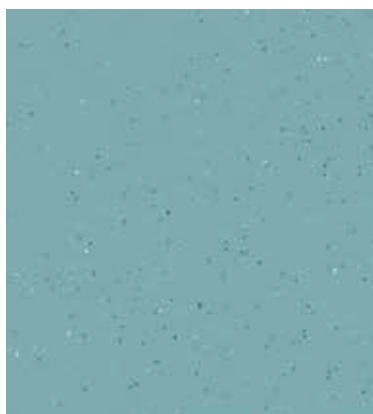
40562 | aqua LRV 61%
NCS S 1510-G



40712 | pale LRV 51%
NCS S 2010-B50G



40612 | yellow green* LRV 47%
NCS S 1050-G60Y



40592 | turquoise LRV 33%
NCS S 3030-B50G



40332 | China blue* LRV 34%
NCS S 3020-R90B



40642 | apple* LRV 17%
NCS S 4040-G30Y



40672 | ocean* LRV 16%
NCS S 5030-B30G



40232 | night* LRV 7%
NCS S 7020-R80B

* Also available in Step Safety vinyl



2,0 mm



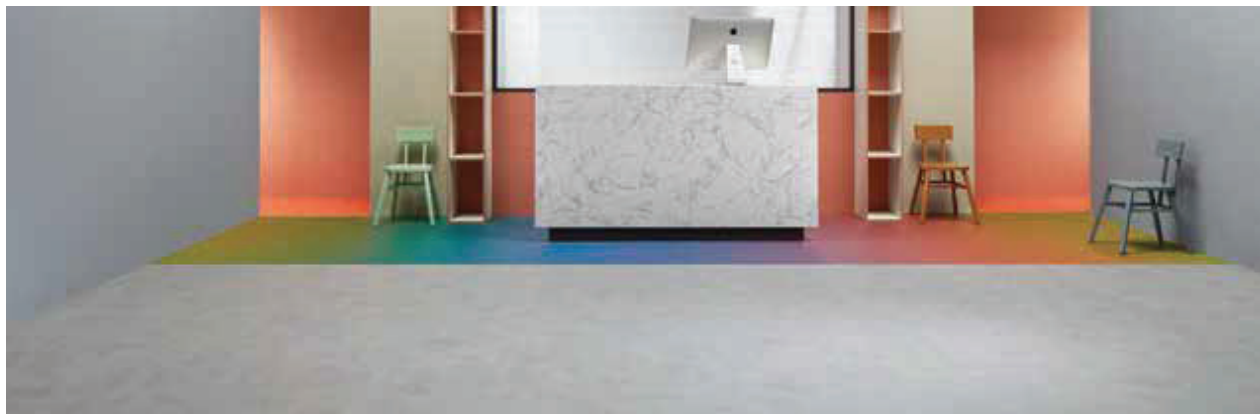
0,7 mm



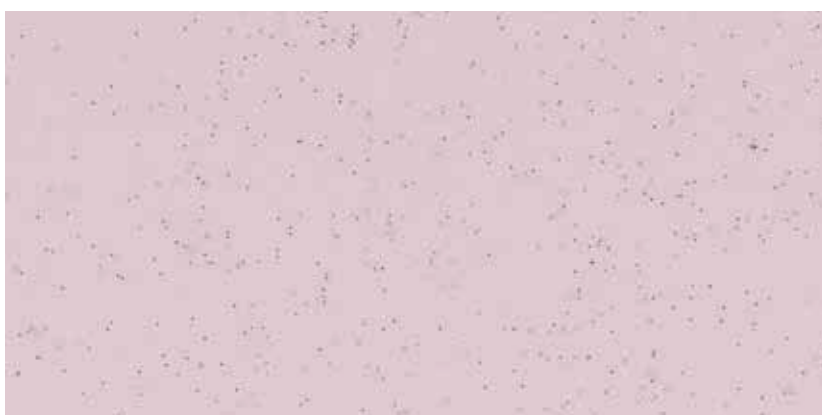
200 cm



±25 m



12742 | light cement 45172 | medium rainbow 40782 | papaya



40942 | lilac

LRV 55%
NCS S 2005-R20B



40242 | pink coral

LRV 46%
NCS S 1040-Y70R



40582 | lavender

LRV 30%
NCS S 3020-R60B



40372 | flamingo*

LRV 35%
NCS S 1050-R10B



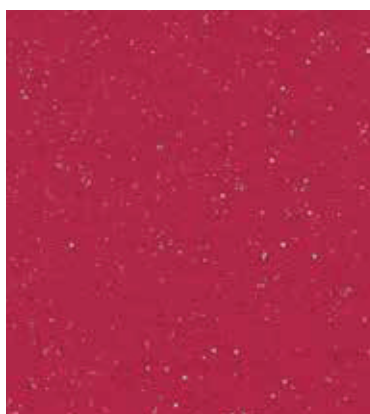
40782 | papaya

LRV 28%
NCS S 1060-Y70R



40182 | grape

LRV 9%
NCS S 6020-R60B



40152 | magenta*

LRV 13%
NCS S 2070-R10B



40202 | poppy

LRV 14%
NCS S 1580-Y90R

* Also available in Step Safety vinyl



2,0 mm



0,7 mm



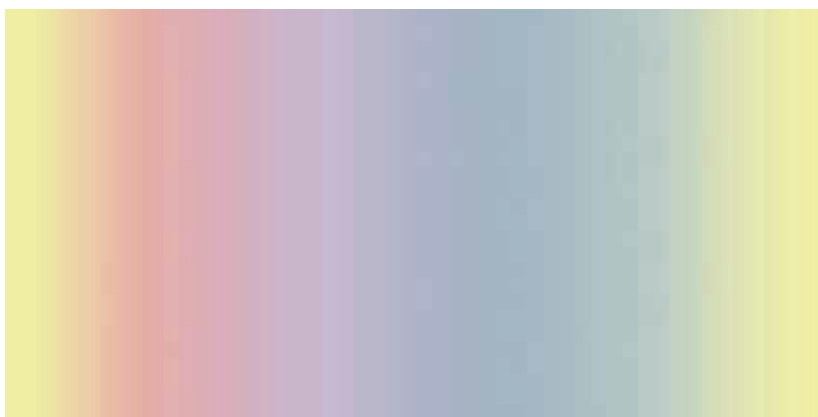
200 cm




±25 m




10032 | fossil stucco 45132 | dark paint




45162 | soft rainbow 




45112 | pastel paint 
scaled from 75 x 75 cm




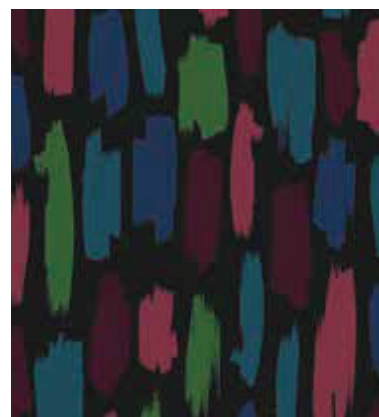
45172 | medium rainbow 




45122 | vivid paint 
scaled from 75 x 75 cm



45182 | strong rainbow 



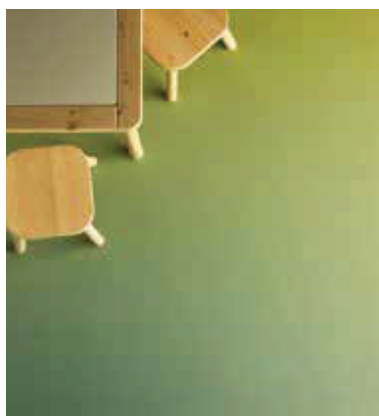
45132 | dark paint 
scaled from 75 x 75 cm



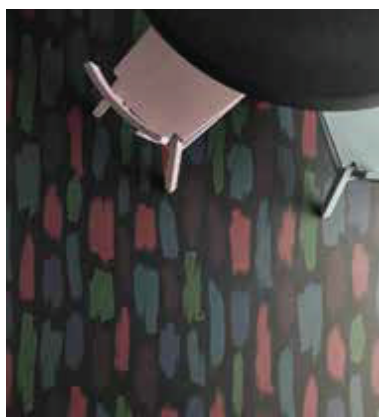
10182 | colourful terrazzo



10132 | bright colourful planks



45172 | medium rainbow



45132 | dark paint

Freedom in colour

Within the Eternal collection there are 4 designs which can be customised on request.

The playful signature designs Colourful Planks, Terrazzo, Paint and Rainbow can add colour to your project, so use your imagination and create your own bespoke Eternal product to fit with your interior and specific requirements. The end result is a product that is as reliable and performs as well as any Eternal product, but especially made for you!

Details for ordering and the process to make your own Eternal floor are available on www.eternalbespoke.com or contact your local Forbo contact person for more information. It is easy to do and even for smaller areas or as a highlight in your project we can make it for you!

For those looking for something even more personal our bespoke design service allows you to create a completely personal floor from as little as 12m². Any print or design that you would like (copyright permitting) can be used in combination with the trusted quality of an Eternal product.







36022 | classic herringbone



13332 | white marble



36022 | classic herringbone 13322 | grey marble



36022 | classic herringbone

EVERY **MOMENT**
OF THE **DAY**



eternal

Experience Eternal vinyl sheet. Every moment of the day.

This vinyl sheet collection has been created to work across a wide variety of application areas.

The varied palette of colours and designs offers the possibility to create any desired atmosphere in every space.

It creates better environments in which to work, live, interact, relax, heal, learn and play.

For every moment of the day Eternal offers the ideal solution: at work, school and in the gym.

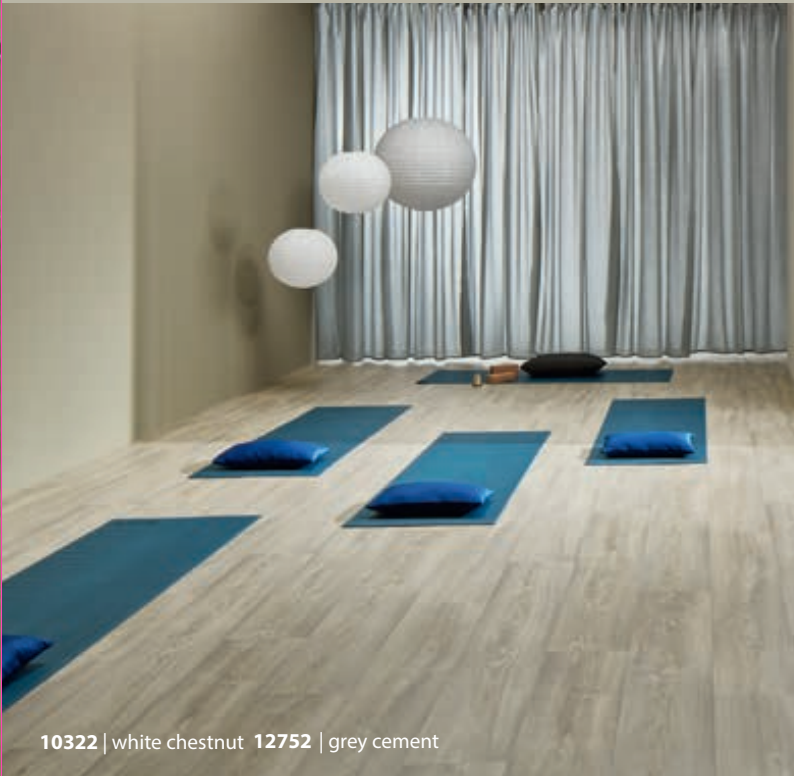
A floor where your feet feel connected, even if you are far away.

*Forbo Eternal: it's the base that connects
and the floor that can be trusted*





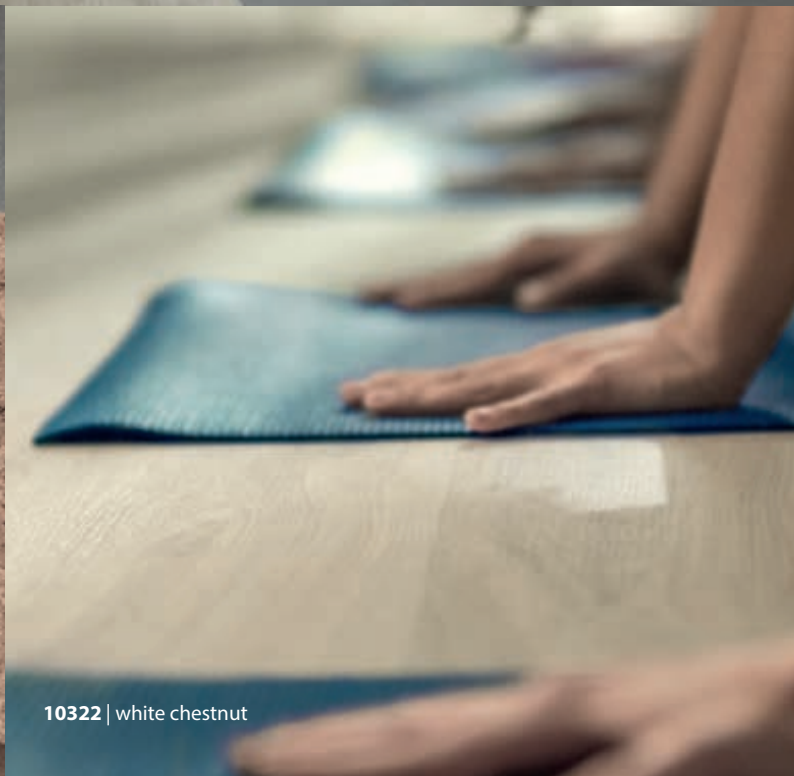
12752 | grey cement



10322 | white chestnut 12752 | grey cement



12752 | grey cement



10322 | white chestnut





12492 | taupe textured concrete



36022 | classic herringbone 12492 | taupe textured concrete



12492 | taupe textured concrete



36022 | classic herringbone 12492 | taupe textured concrete





10172 | natural terrazzo




10172 | natural terrazzo




36062 | grey herringbone 12012 | quartz stone 10172 | natural terrazzo




10172 | natural terrazzo 36062 | grey herringbone




40522 | lemon



40612 | yellow green 13802 | blond timber



45172 | medium rainbow



45162 | soft rainbow

Eternal has a proven track record of delivering reliable and beautiful solutions

TRUST IN DESIGN

- The most realistic Wood and Material designs, created to deliver stylish aesthetics in any project
- The PUR Pearl finish ensures a matt, natural and authentic look
- Co-ordinated design offer with Step safety flooring and other Forbo ranges
- Possibility to customise specific signature designs to your project requirements
- New PUR Concrete embossing for true to life realism

TRUST IN PERFORMANCE

- Lowest possible residual indentation, as a result of the balanced construction and calandered backing
- Best protection against scuff and scratching with Forbo's PUR Pearl lacquering and embossing protection techniques
- Easy to handle during installation and will remain flat and stable in use thanks to the high tech product construction
- Pigmented coloured wear layer in Eternal Colour for vivid and permanent colour intensity

TRUST IN SUSTAINABILITY

- At least 60% recycled material in the backing, all production waste is put to good use
- 100% phthalate free and with a low emission levels
- Manufactured using 100% green electricity from renewable resources and meeting all relevant quality and environmental standards
- Micro embossing technology reduces the need for chemical cleaning and increases the floor's lifespan

TRUST IN CORAL AND NUWAY

A well designed entrance flooring system will help to prevent slips by reducing the dirt and moisture being tracked into the building, prolonging the life of the Eternal floor covering and reducing cleaning costs. Forbo Coral and Nuway entrance systems are independently proven to remove and retain up to 95% of all dirt and moisture entering a building. Please contact customer services for more information.





10842 | cream oak

EVERY **MOMENT** OF THE **DAY**



10842 | cream oak 10852 | chocolate oak 40562 | aqua



40562 | aqua



10852 | chocolate oak 40562 | aqua

Technical specifications

Eternal meets the requirements of ISO 10582 and EN 649



| | | | |
|--|--|---|---------------------------|
| | Total thickness | EN ISO 24346 | 2.0 mm |
| | Wear layer thickness | EN ISO 24340 | 0.7 mm |
| | Collection size | | 96 |
| | Commercial use | EN ISO 10874 | 34 very heavy |
| | Light industrial use | EN ISO 10874 | 43 heavy |
| | Roll width | EN ISO 24341 | 2.0 m |
| | Roll length | EN ISO 24341 | ≤ 25 m |
| | Total weight | EN ISO 23997 | ca. 2.8 kg/m ² |
| | Dimensional stability | EN ISO 23999 | < 0.1 % |
| | Residual indentation <i>Typical value</i> | EN ISO 24343-1 | ≤ 0.05 mm ~ 0.02 mm |
| | Castor chair continuous use | ISO 4918 / EN 425 | pass |
| | Light fastness | ISO 105-B02 | ≥ 6 |
| | Flexibility | EN ISO 24344 | ø 10 mm |
| | Resistance to chemicals | EN ISO 26987 | Very good |
| | Slip resistance | DIN 51130 | R10 |
| | Suitable for floor heating | | Yes < 27 C |
| | Indoor Air Emissions: TVOC after 28 days | ISO 16516 | ≤ 20 µg/m ³ |
| | Life Cycle Assessment | LCA is the foundation for securing the lowest environmental impact. | |
| | Creating better environments | | |
| | Renewable electricity | Eternal is manufactured using 100% electricity from renewable sources. | |
| | Recycled content | Eternal contains at least 60% recycled content in the backing. | |
| | Back to the Floor | Back to the Floor - Installation off cuts can be collected via our Back to the Floor scheme. | |
| | Ska | Eternal meets the Ska rating criteria for M12 floor coverings in office, retail and higher education schemes. | |
| | | EN 14041 | |
| | | 0200131-DoP-507 | |
| | Eternal meets the requirements of EN 14041 | | |
| | Reaction to fire | EN 13501-1 | B _s s1, L, NCS |
| | Slip resistance | EN 13893 | µ ≥ 0.30 |
| | Body voltage | EN 1815 | ≤ 2 kV |
| | Thermal conductivity | EN 12524 | 0.25 W/m·K |

* Temperature < 27 °C

Eternal Compact Vinyl Heterogeneous PVC floor covering (EN649)

| | | | | | |
|------------------------------------|------------------|---------------|-----------------|----------------------------|-------------------------|
| Building Type Commercial | Education | Health | Domestic | Retail (Durability) | Retail (Fashion) |
| A | A+ | A+ | A | A+ | A+ |

The recommended adhesive for Eternal is 540 Eurosafe Special or 640 Eurostar Special

All Forbo Flooring Systems' sales organisations and manufacturing sites worldwide have certified Quality Management Systems in accordance with ISO 9001.

All Forbo Flooring Systems' manufacturing plants have certified Environmental Management Systems in accordance with ISO 14001.

The Life Cycle Assessment (LCA) of Forbo Flooring Systems' products is documented in individual Environmental product declarations (EPDs) or local building rating schemes such as BREEAM.

Eternal is manufactured in a facility certified to SA8000 and OHSAS 18001.



UK

Forbo Flooring UK Limited
High Holborn Road, Ripley
Derbyshire DE5 3NT

London EC1 showroom

79 St John Street, Clerkenwell
London EC1M 4NR
Tel: 0207 553 9300

For commercial enquiries:

If calling from the North,
Midlands, London & South East
Tel: 0800 0282 162

If calling from Scotland & South West

Tel: 0800 0935 258

Nuway enquiries:

Tel: 01773 740 688

Residential enquiries:

Tel: 0800 0935 846

Email: info.flooring.uk@forbo.com

www.forbo-flooring.co.uk

Samples:

Tel: 0800 731 2369

samples.uk@forbo.com

Find us on



Ireland

Forbo Ireland Ltd
2 Deansgrange Business Park
Blackrock
Co Dublin

Tel: 00353 1 2898 898

Fax: 00353 1 2898 177

Email: info.ireland@forbo.com

www.forbo-flooring.ie

Registered office:

Forbo Flooring UK Limited
High Holborn Road, Ripley
Derbyshire DE5 3NT
Registered in England: No 9200318



Whilst Forbo Flooring UK Limited does its best to ensure that the contents of this samplebook are correct and accurate at the time of publication, to the fullest extent permitted by law, Forbo Flooring UK Limited makes no, and expressly disclaims all, guarantees of any kind, expressed or implied in respect of the information, content, materials or products displayed in this samplebook and does not represent that the information is accurate, complete or current and you are advised to visit our website at www.forbo-flooring.co.uk for up-to-date details or corrections to such contents.