



**Textile** Flocked Flooring

**flotex<sup>®</sup>** colour



30 x 2 m



50 x 50 cm

creating better environments

**forbo**  
FLOORING SYSTEMS





# flotex<sup>®</sup> colour

*Design. Versatility. Inspiration.*

Flotex seamlessly combines aesthetics and functionality to create a flooring solution that's not only visually appealing but also exceptionally practical. Whether you're designing a hotel, a busy hallway, or a dynamic office environment, Flotex stands out as the ideal choice to enhance the comfort, durability, and overall ambience of your space.

When you choose Flotex, you're not just choosing a flooring; you're choosing a statement of style, and a solution which is easy to live with thanks to its special performance and durability. Explore the Flotex colour collection and experience the perfect synergy of form and function in your space.

The Flotex Colour collection is available in sheet and tiles, for endless installation possibilities.

## WHAT MAKES FLOTEX UNIQUE?

- Flotex flocked flooring is a completely unique textile floor covering that combines the cleaning properties and hard wearing & durability characteristics of a resilient floor with the warmth, acoustics and underfoot comfort of a carpet.
- Flotex is made up from a solid vinyl, reinforced base with a densely flocked surface of nylon 6.6 fibres, which are anchored firmly into the base layer.
- There are over 70 million fibres per square metre in Flotex, making it extremely dimensionally stable and hard-wearing.

## DESIGN

- Three versatile and fresh designs make up the Flotex Colour collection: Metro, Calgary and Penang.
- Together they offer a range of 60 unique colourways and are available in sheet and tile, leading to endless design possibilities and combinations.

## CLEANABILITY

- Thanks to being made from nylon fibres, stains such as coffee, permanent marker or even engine oil, can all be easily removed from Flotex.
- This improved cleanability will save you time and cut your cleaning costs.

## DURABLE

- Designed to support high traffic, Flotex cleans up like new each and every time without fading or wearing.
- Our 10-year guarantee means it's well suited to spaces where durability and cleanability are key.
- Can't decide between functionality or style? Then have both with Flotex.





flotex® colour

s = sheet

s =  730 x 2 meters

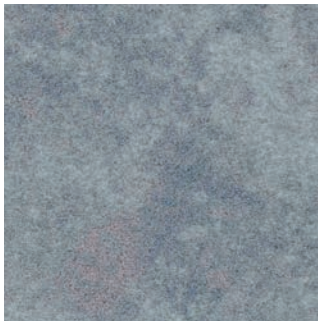
t = tiles

t =  50 x 50 cm

○ = superior  
appearance  
rating

◐ = good  
appearance  
rating

● = moderate  
appearance  
rating



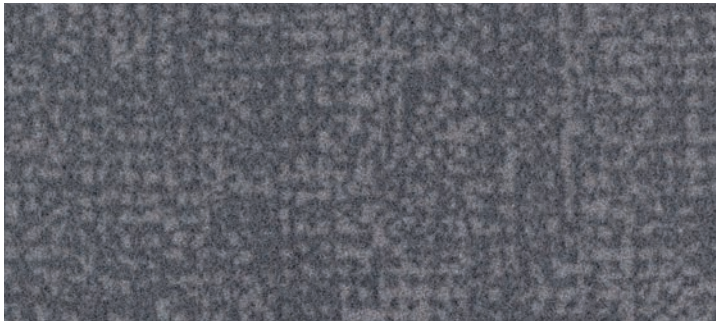
calgary | carbon  
s290019 t590019

LRV 18



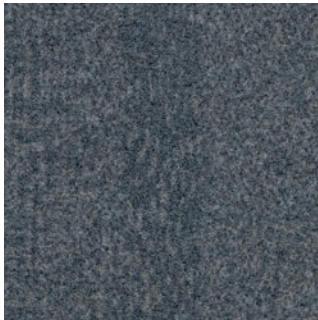
calgary | cement  
s290012 t590012

LRV 13



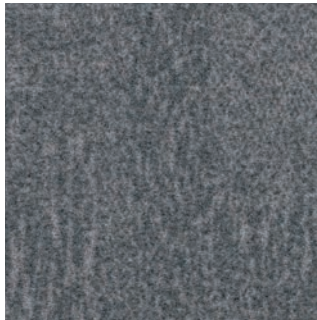
metro | nimbus  
s246005 t546005

LRV 13



penang | mercury  
s482004 t382004

LRV 10

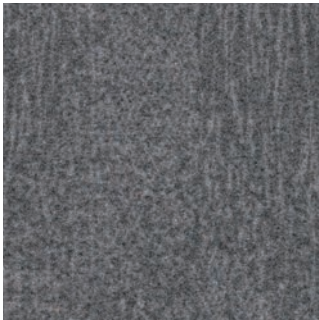


penang | smoke  
s482005 t382005

LRV 14



**s482005** | penang smoke **s482031** | penang ash



penang | nimbus  
s482017 t382017

LRV 14



penang | zinc  
s482007 t382007

LRV 9



calgary | quartz  
s290011 t590011

LRV 28



calgary | linen  
s290026 t590026

LRV 18



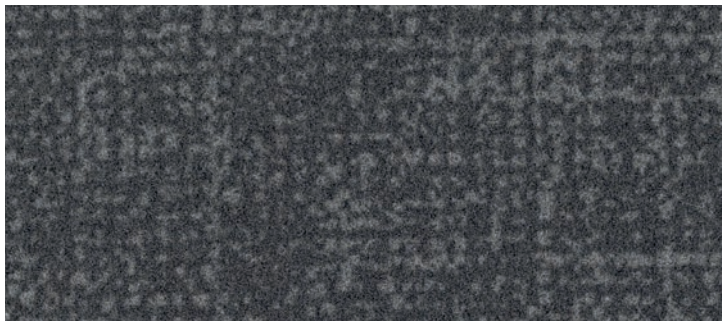
calgary | espresso  
s290023 t590023

LRV 15



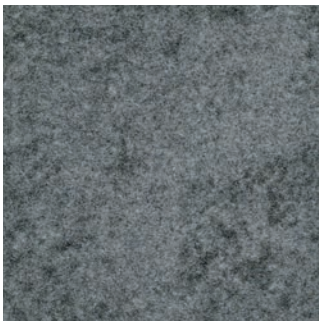
penang | grey  
s482037 t382037

LRV 10



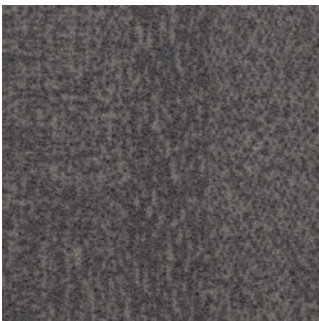
metro | grey  
s246006 t546006

LRV 8



calgary | grey  
s290002 t590002

LRV 8



penang | shale  
s482020 t382020

LRV 10



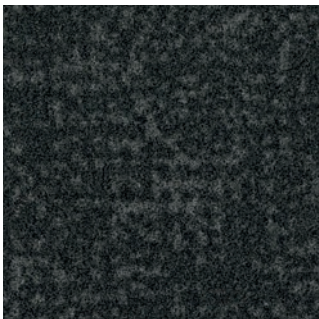
metro | anthracite  
s246008 t546008

LRV 3



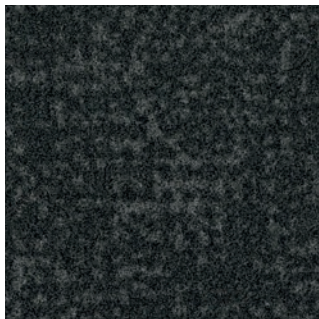
penang | anthracite  
s482001 t382001

LRV 3



metro | ash  
s246007 t546007

LRV 4



calgary | ash  
s290010 t590010

LRV 4



penang | ash  
s482031 t382031

LRV 5



flotex® colour

s = sheet

s =  730 x 2 meters

t = tiles

t =  50 x 50 cm

○ = superior  
appearance  
rating

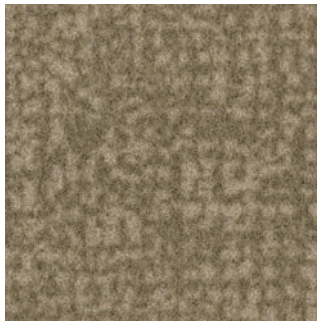
◐ = good  
appearance  
rating

● = moderate  
appearance  
rating



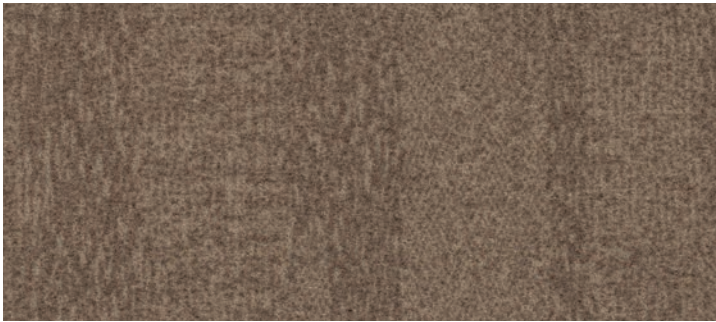
penang | bamboo  
s482018 t382018

LRV 21



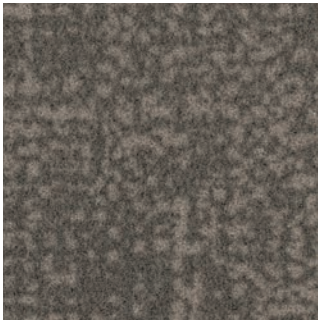
metro | sand  
s246012 t546012

LRV 18



penang | flax  
s482075 t382075

LRV 15



metro | pebble  
s246011 t546011

LRV 14



penang | beige  
s482015 t382015

LRV 12



**s246011** | metro pebble **s246017** | metro berry



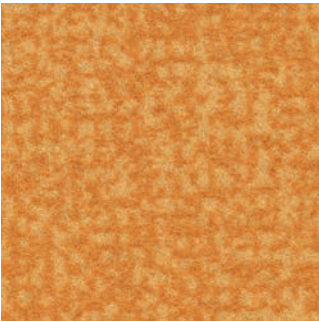
penang | coral  
s482016 t382016

LRV 16



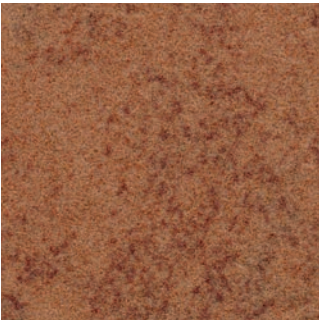
calgary | sahara  
s290006 t590006

LRV 29



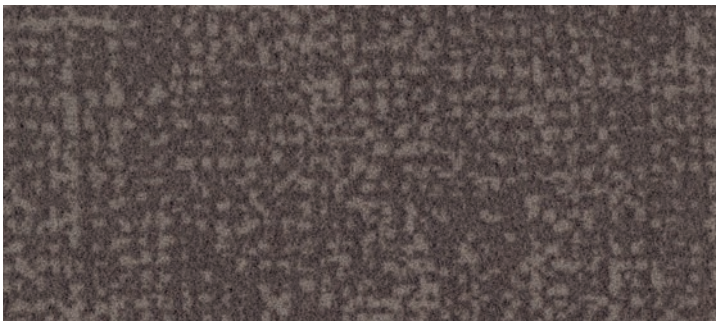
metro | gold  
s246036 t546036

LRV 29



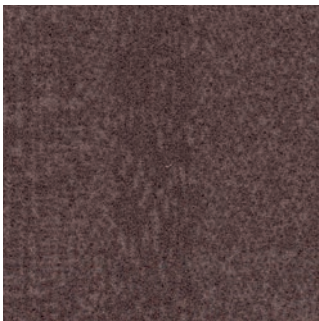
calgary | melon  
s290005 t590005

LRV 10



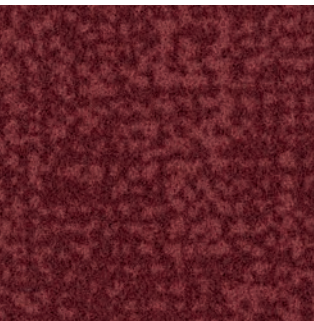
metro | pepper  
s246009 t546009

LRV 9



penang | dusk  
s482023 t382023

LRV 8



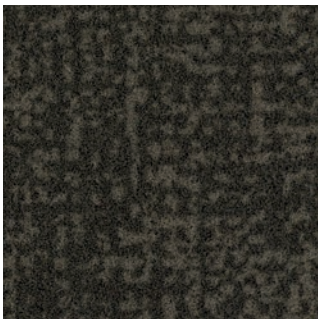
metro | berry  
s246017 t546017

LRV 5



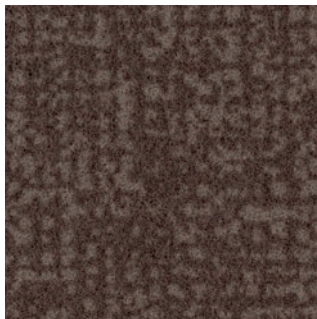
calgary | fire  
s290024 t590024

LRV 11



metro | concrete  
s246014 t546014

LRV 4



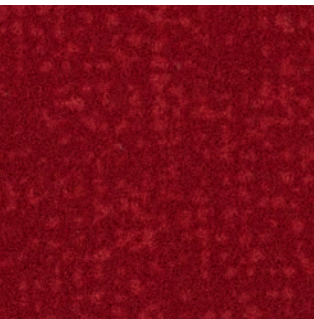
metro | cocoa  
s246015 t546015

LRV 7



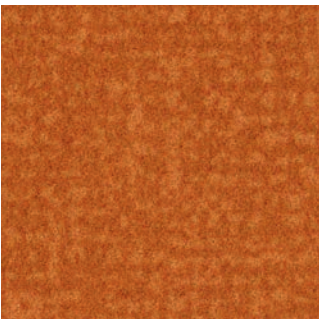
metro | chocolate  
s246010 t546010

LRV 3



metro | red  
s246026 t546026

LRV 9



metro | tangerine  
s246025 t546025

LRV 17





s = sheet

s =  30 x 2 meters

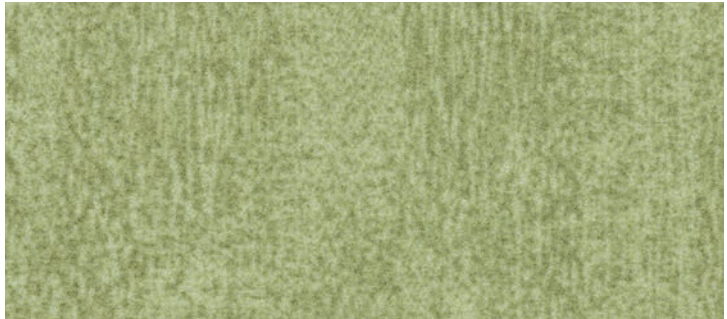
t = tiles

t =  50 x 50 cm

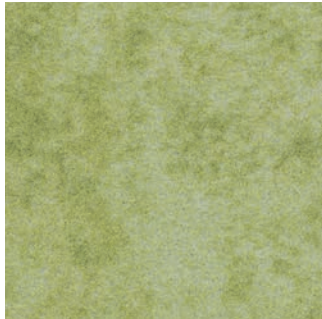
○ = superior  
appearance  
rating

◐ = good  
appearance  
rating

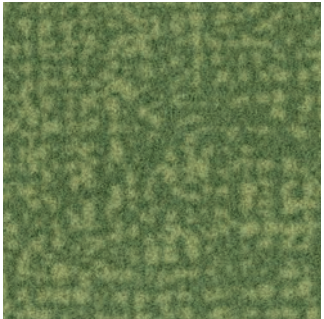
● = moderate  
appearance  
rating



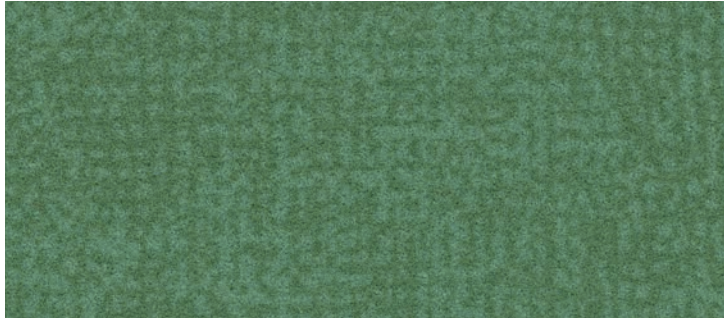
penang | sage  
s482006 t382006 LRV 35%  
◐



calgary | lime  
s290014 t590014 LRV 36%  
◐



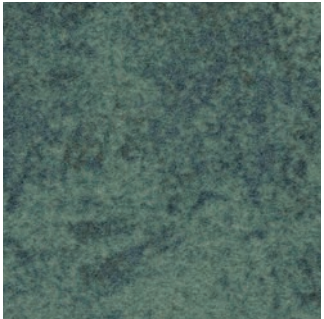
metro | citrus  
s246019 t546019 LRV 18%  
◐



metro | apple  
s246037 t546037 LRV 15%  
○



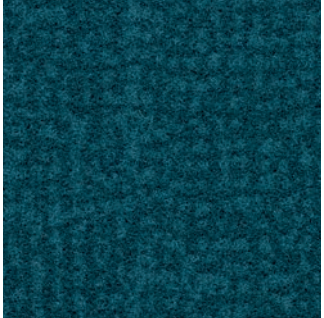
penang | evergreen  
s482010 t382010 LRV 7%  
○



calgary | moss  
s290009 t590009 LRV 13%  
○



metro | evergreen  
s246022 t546022 LRV 6%  
○



metro | petrol  
s246032 t546032 LRV 4%  
○



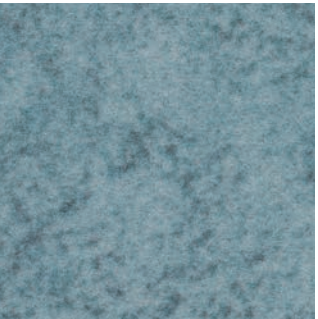
**s246018** | metro mineral



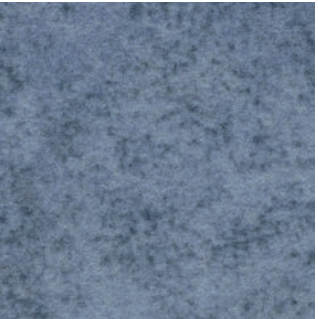
calgary | menthol  
s290004 t590004 LRV 17%  
◐



metro | mineral  
s246018 t546018 LRV 15%  
◐



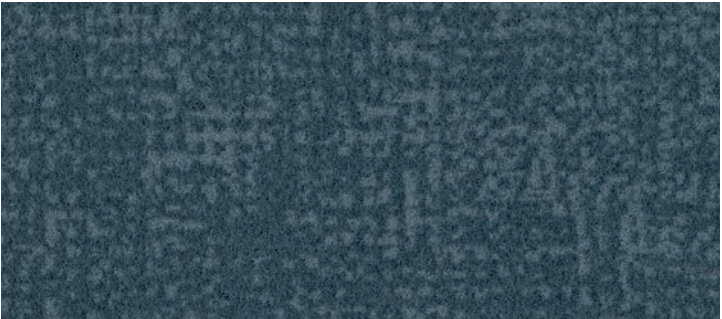
calgary | aqua  
s290021 t590021 LRV 29%  
◐



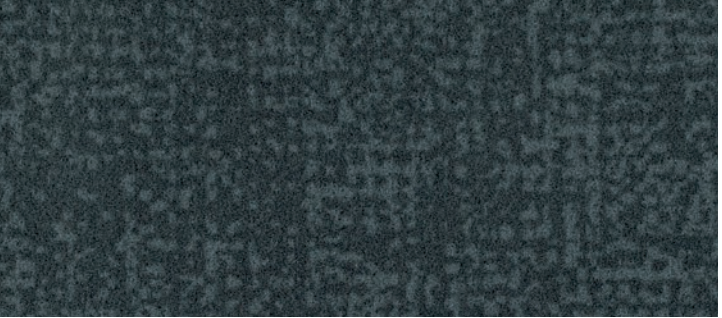
calgary | riviera  
s290025 t590025 LRV 16%  
◐



metro | gull  
s246004 t546004 LRV 11%  
○



metro | tempest  
s246002 t546002 LRV 7%  
○




metro | carbon  
s246024 t546024 LRV 5%  
○



penang | azure  
s482116 t382116 LRV 4%  
○

s = sheet

s =  30 x 2 meters

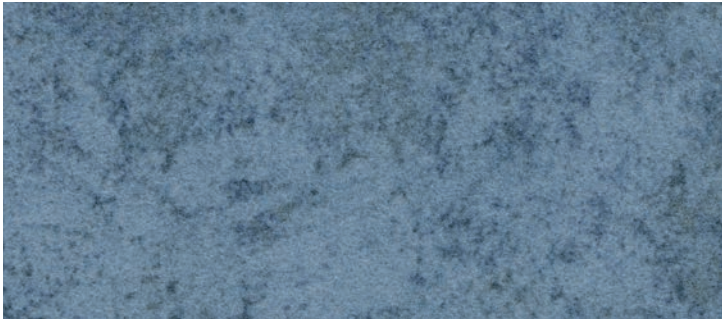
t = tiles

t =  50 x 50 cm

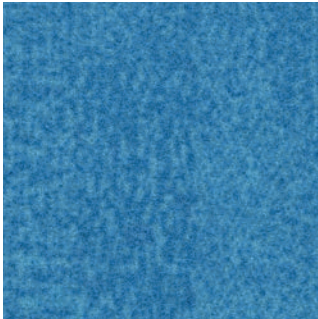
○ = superior  
appearance  
rating

◐ = good  
appearance  
rating

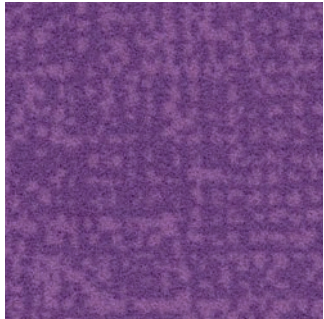
● = moderate  
appearance  
rating



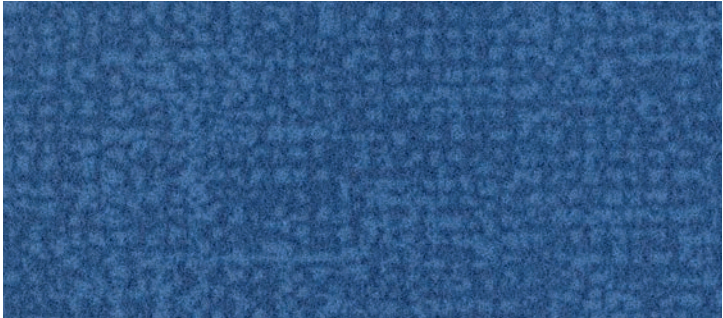
calgary | sky  
s290001 t590001 LRV 15%  
◐



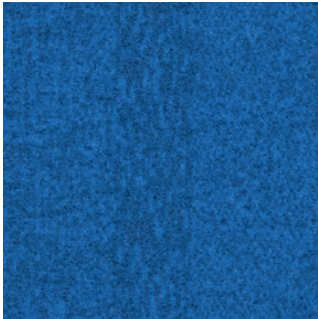
penang | sapphire  
s482011 t382011 LRV 17%  
◐



metro | lilac  
s246034 t546034 LRV 9%  
○



metro | lagoon  
s246020 t546020 LRV 10%  
◐



penang | neptune  
s482026 t382026 LRV 10%  
◐



calgary | azure  
s290015 t590015 LRV 4%  
○



metro | indigo  
s246001 t546001 LRV 3%  
○



**s482116** | penang azure























**s482011** | penang sapphire



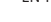







## Technical specifications

Flotex sheet & tiles meet the requirements of EN 1307

|   | Flotex colour sheet                  |   | Flotex colour tile                         | Flotex borders                             |  |
|---|--------------------------------------|---|--|--|--|
|  | Total thickness                      | ISO 1765  | 4.3 mm                                     | 5.0 mm                                     | 4.3 mm                                     |
|  | Total weight                         | ISO 8543  | 1,800 g/m²                                 | 4,800 g/m²                                 | 1,800 g/m²                                 |
|  | Pile composition                     |   | 100% polyamide 6.6                         | 100% polyamide 6.6                         | 100% polyamide 6.6                         |
|  | Commercial use                       | EN-ISO 10874  | Class 33                                   | Class 33                                   | Class 33                                   |
|  | Sheet roll width                     |   | 2.0 m                                      | –  | 11 cm or 22 cm                             |
|  | Sheet roll length                    |   | ± 30 m                                     | –  | 15 m                                       |
|  | Tile size                            |   | –  | 50 x 50 cm                                 | –  |
|   | Packaging per carton tiles           |   | –  | 12 (3 m²)                                  | –  |
|  | Dimension stability                  | ISO 2551 / EN 986   | ≤ 0.2%                                     | ≤ 0.1%                                     | ≤ 0.2%                                     |
|  | Abrasion resistance                  | EN 1307 annex F   | > 1000 cycles                              | > 1000 cycles                              | > 1000 cycles                              |
|  | Castor chair continuous use          | ISO 4918  | r ≥ 2.4                                    | r ≥ 2.4                                    | r ≥ 2.4                                    |
|  | Colour fastness to light             | EN-ISO 105-B02  | ≥ 6  | ≥ 6  | ≥ 6  |
|  | Slip resistance                      | BS 7976-2 (UK SRG pendulum)   | Dry - low slip risk<br>Wet - low slip risk | Dry - low slip risk<br>Wet - low slip risk | Dry - low slip risk<br>Wet - low slip risk |
|  | Acoustic impact noise reduction      | EN-ISO 717-2  | ΔL <sub>w</sub> ≥ 21 dB                    | ΔL <sub>w</sub> ≥ 19 dB                    | ΔL <sub>w</sub> ≥ 21dB                     |
|  | Acoustic sound absorption            | ISO 354   | α <sub>w</sub> = 0.10 (H)                  | α <sub>w</sub> = 0.10 (H)                  | α <sub>w</sub> = 0.10 (H)                  |
|  | Water impermeability                 | EN 1307 annex G   | Pass                                       | Pass                                       | Pass                                       |
|  | Creating Better Environments         |   |  |  |  |
|  | Renewable electricity                | Flotex is manufactured using 100% electricity made from renewable sources.  |  |  |  |
|  | Recycled content                     | Flotex sheet contains up to 20% recycled content by weight. Flotex tile contains up to 59% recycled content by weight.  |  |  |  |
|  | Indoor air quality                   | Flotex is approved by Allergy UK. All Flotex products are tested for indoor air emissions in accordance with EN 16516 after 3 days and 28 days. Flotex sheet has ultra low emissions. |  |  |  |
|  | Indoor Emissions: TVOC after 28 days | EN 16516  | ≤ 0.1 mg/m³                                | ≤ 0.1 mg/m³                                | ≤ 0.1 mg/m³                                |
|  | Back to the Floor                    | Installation off cuts can be collected and recycled via Back to the Floor   |  |  |  |
|   | SKA                                  | Flotex meets SKA Rating criteria for M12 for soft floor coverings in office, retail and higher education schemes.   |  |  |  |
|  | LCA                                  | Life Cycle Assessment is the foundation for securing the lowest environmental impact.   |  |  |  |

|  |            |  |  |  |
|--|------------|--|--|--|
| Flotex meets the requirements of EN 14041:2004                                 |            | EN 14041:2004  | EN 14041:2004  | EN 14041:2004  |
|  |            |   |   |   |
|  |            | 1200101- DoP -012  | 1200201- DoP -101  | 1200101- DoP -012  |
| <b>Great Britain Only</b><br>Flotex meets the requirements of BS EN 14041:2004 |            | BS EN 14041:2004   | BS EN 14041:2004   | BS EN 14041:2004   |
|  |            |  |  |  |
|  |            | 1200101- DoP -GB108  | 1200201- DoP -GB108  | 1200101- DoP -GB108  |
| Reaction to fire   | EN 13501-1 | B <sub>f</sub> ≤s1, L, NCS   | B <sub>f</sub> ≤s1, L, CS  | B <sub>f</sub> ≤s1, L, NCS   |
| Slip resistance  | EN 13893   | μ ≥ 0.30   | μ ≥ 0.30   | μ ≥ 0.30   |
| Body voltage   | ISO 6356   | ≤ 2.0 kV   | ≤ 2.0 kV   | ≤ 2.0 kV   |
| Thermal conductivity   | EN 12524   | 0.06 W/mK  | 0.06 W/mK  | 0.06 W/mK  |
| Content of specific dangerous substances                                       | EN 14041   | Compliant  | Compliant  | Compliant  |

Our recommended adhesive for Flotex Sheet is 640 Eurostar Special. Our recommended tackifier for Flotex tiles is 542 eurofix tack plus. Please contact customer services for more information. All Forbo Flooring Systems' sales organisations worldwide have a certified Quality Management System in accordance with ISO 9001. All Forbo Flooring Systems' manufacturing operations have a certified Environmental Management System in accordance with ISO 14001. The Life Cycle Assessment (LCA) of Forbo Flooring Systems' products is documented in individual Environmental Product Declarations (EPD's) which can be found on all of our websites.



**UK**  
Forbo Flooring UK Limited  
High Holborn Road,  
Ripley, Derbyshire, DE5 3NT

**London EC1 showroom**  
79 St John Street, Clerkenwell  
London EC1M 4NR  
Tel. 0207 553 9300

**For commercial enquiries :**  
If calling from the North,  
London & South East  
Tel. 0800 0282 162

If calling from Scotland,  
Midlands & South West  
Tel. 0800 0935 258

**Nuway enquiries :**  
Tel. 01773 740 688

**Residential enquiries :**  
Tel. 0800 0935 846

E-mail : [info.flooring.uk@forbo.com](mailto:info.flooring.uk@forbo.com)  
[www.forbo-flooring.co.uk](http://www.forbo-flooring.co.uk)

**Samples :**  
**Tel. 0800 731 2369**  
**Email: [samples.uk@forbo.com](mailto:samples.uk@forbo.com)**

**Ireland**  
Forbo Ireland Ltd.  
2 Deansgrange Business Park  
Blackrock  
Co Dublin  
Tel. 00353 1 2898 898  
E-mail : [info.ireland@forbo.com](mailto:info.ireland@forbo.com)  
[www.forbo-flooring.ie](http://www.forbo-flooring.ie)

**Registered office :**  
Forbo Flooring UK Limited  
High Holborn Road  
Ripley  
Derbyshire DE5 3NT  
Registered in England 9200318



Whilst Forbo Flooring UK Limited does its best to ensure that the contents of this samplebook are correct and accurate at the time of publication, to the fullest extent permitted by law, Forbo Flooring UK Limited makes no, and expressly disclaims all, guarantees of any kind, expressed or implied in respect of the information, content, materials or products displayed in this samplebook and does not represent that the information is accurate, complete or current and you are advised to visit our website at [www.forbo-flooring.co.uk](http://www.forbo-flooring.co.uk) for up-to-date details or corrections to such contents.



FLOORING SYSTEMS